

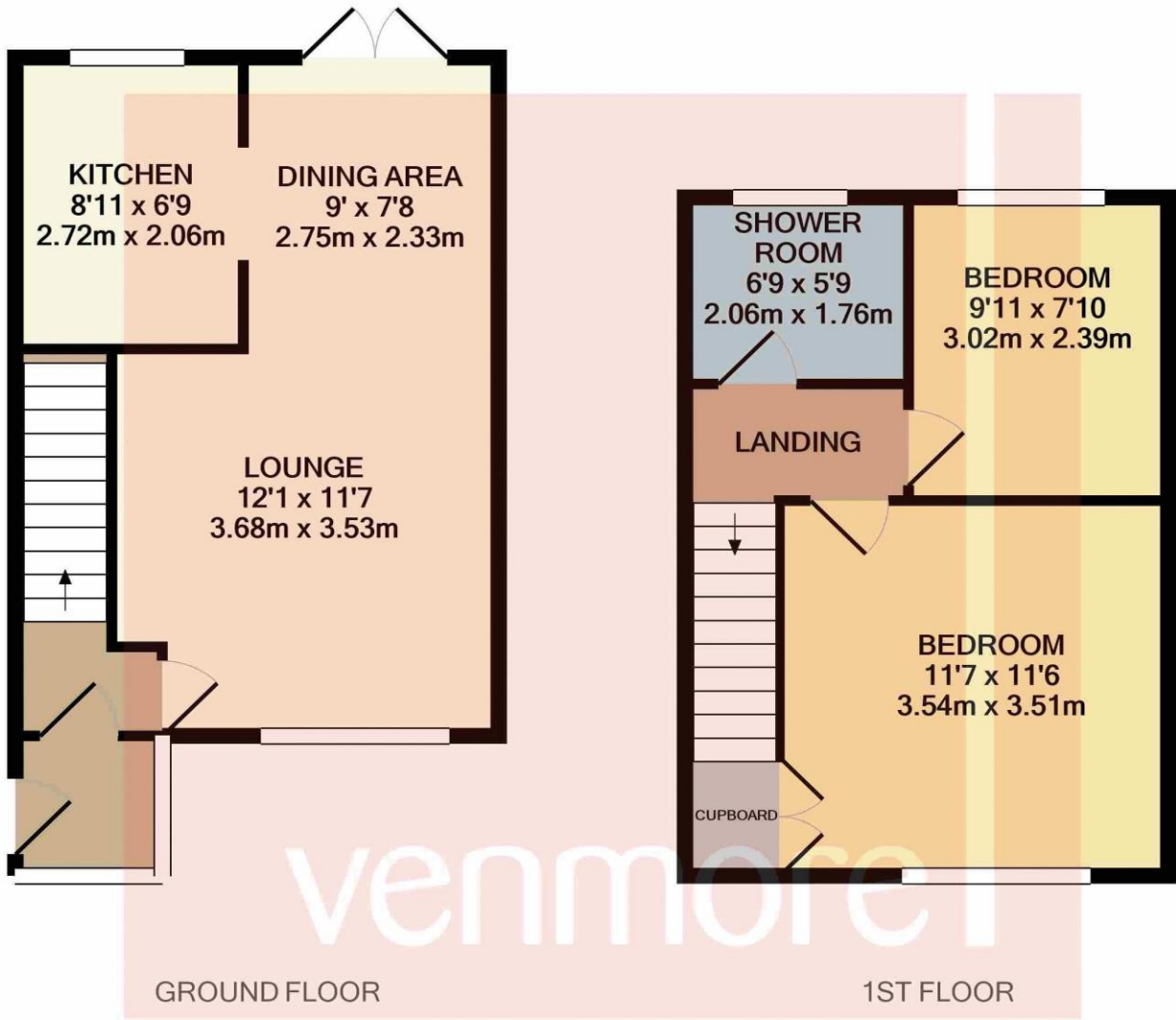
Explore the property...

EPC & Floor Plans



Kings Close
L17 9QS

Offers Over £190,000



Measurements are approximate. Not to scale. Illustrative purposes only
Made with Metropix ©2020

Tenure: Freehold

The Small Print...

Agents Note: These particulars are thought to be correct, though their accuracy cannot be guaranteed and they do not form part of any contract. Please note that we have not tested any apparatus, fixtures, fittings or services and as such cannot verify that they are in working order or fit for their purpose. Furthermore, solicitors should confirm that moveable items described in the sales particulars are, in fact, included in the sale since circumstances do change during marketing or negotiations. A final inspection prior to exchange of contracts is also recommended. Although we try to ensure accuracy, measurements used in this brochure may be approximate. Therefore, if intending purchasers need accurate measurements to order carpeting, or to ensure existing furniture will fit, they should take such measurements themselves.

Contact Venmores - Allerton
Call - 0151 733 9000

Email - allerton@venmores.co.uk

Visit - 8-10 Allerton Road Mossley Hill Merseyside



- Semi detached
- Two bedrooms
- Rear garden

- Driveway
- Plenty of nearby amenities
- No chain

About the property...

Brought to the market by Venmores is this lovely two bedroom semi detached home in a the much sought after area of Aigburth, L17. Located within a quiet cul-de-sac and being offered with no chain, this offers an excellent opportunity for a first time buyer or perhaps family thinking about a downsize. The property briefly comprises an entrance porch, spacious lounge, fitted kitchen, two generous bedrooms and a shower room. Externally there is a front driveway and a family sized garden to rear offering access into the garage. Viewing is highly recommended.

About the location...

Located in Aigburth, there is an abundance of amenities which include the famous Sefton Park, shops, schools representing all ages and transport links.

